

The LOS ANGELES Soroptimist

Service
Loyalty
Co-Operation
Tolerance



Vol. II

JUNE 22, 1926

No. 41

Soroptimist Club Installation

Music Room - The Biltmore Hotel - 12 Sharp
Tuesday, June 22, 1926

President GERTRUDE C. MAYNARD, Presiding

GROUP OF SONGS.....*Alice Lohr*
Accompanied by Frances Reordan
ESTRELLITA*Pouce*
FRIEND OF MINE.....*Sanderson*

INSTALLATION ADDRESS.....*Dr. Marion Tracy Whiting*
JANOS KURUCZ, brilliant Hungarian Composer and Pianist
will give two of his own Compositions

INSTALLATION OF NEW OFFICERS..*Gertrude C. Maynard*
*This is the last meeting of the Club before Vacation. We
shall meet again the second Tuesday in September. Make
your reservations for Tuesday NOW.*

MUSIC ROOM : BILTMORE HOTEL
Tickets \$1.30

---and last week

Post-view of a busy year beginning—it seems not so long ago—with another installation just before our summer vacation, followed by a fine snappy program given by Edith Ione Moon on June 30. Then Admission Day in September in charge of Grace S. Stoermer with notables and flags and patriotic speeches; a lecture on the City Beautiful by Gordon Whitehall, a planning expert; an own Members' Day when each one told what she did and why; our Fire Insurance—Elizabeth and her Jimmy celebrating Fire Prevention Week with Reynold Blight as chief speaker; W. Maxwell Burke with an address on "Investments and Speculations" on October 13; Winifred Hausam's presentation of her Vocational Bureau program with Mrs. Willoughby Rodman on "Women a Factor in the Scheme of Things" on October 20; the Telephone Company with a demonstration of new equipment and the tax meters; Ruth Helen Davis on "What Price Glory" and S. E. Lynd on "World

Peace"; Agnes Woodward's wonderful whistlers and demonstrations of writing bird symbols; our Glorious Harvest Luncheon at Thanksgiving time and our first real gifts to the Service Fund; David Roth teaching us to remember; Tilda Rohr's lovely singing voice; Norma Gould's marvelous dancers on December 15 and the jolly Christmas party on the 22nd, with Santa Claus and real elves with a tree; the old year ended very happily.

Sanford Bell gave us an inspirational talk at our first January meeting, followed by Rose Bryant's Big Sister League program with Judge Rex B. Goodcell and Mrs. Harriet Works as speakers; Constance Balfour and her daughter, Eveline, gave us a group of songs January 19, Margaret Lancaster giving "The Psychology of the Voice" on Alice E. Cross' program; Anne Hare Harrison gave some bits from her pageant, "The Golden Wedding," with school children;

(Continued on Page 2)

Soroptimist Clubs in Order of Organization

- ALAMEDA COUNTY (Oakland.) (Organized Sept. 26, 1921.) President, Luella S. Swauger. Secretary, Mrs. H. M. Gamble, 692 Lakeshore Ave., Oakland. Meets Mondays at the Hotel Oakland.
- SAN FRANCISCO (Organized Feb. 27, 1922.) President, Mary Dry Boldemann. Secretary, Nellie M. Remler, 2054 Hyde Street. Gaystone 6875.
- LOS ANGELES (Organized July 18, 1922.) President, Mrs. Gertrude C. Maynard; Secretary, Alice Mavor Edwards, 426 W. 6th St. Meets Tuesdays at Hotel Biltmore.
- WASHINGTON, D. C. (Organized Nov. 27, 1922.) President, Mrs. Mina C. Van Winkle, 1445 Ohio Ave. Secretary, Mrs. Ella Davis Levis, 732 17th Street, N. W. Meets Wednesdays, Lafayette Hotel.
- NEW YORK (Organized June 20, 1923.) President, Dr. Valeria H. Parker; Secretary, Pauline E. Mandigo, Room 1221, 342 Madison Ave. Meets first and third Tuesday, Town Hall Club, 123 W. 43rd St.
- LONDON (Organized Feb. 27, 1924.) President, Mrs. Fox Pitt, Secretary Mrs. Hill Tickell, Windsor House, Victoria St., S. W. 1; Phone Victoria 2572. Meets Thursday, Criterion Rest.
- PARIS (Organized Oct. 8, 1924.) Alice LaMaziere, President; Secretary, Mlle. Marthe Gillet, 47 Avenue de l'Opera. Meets Wednesdays, Restaurant de Vallois, Palais Royal.
- LONG BEACH (Organized 1923.) President, Miss Naomi Tomkins; Executive Secretary, Anna McDonnell. Meets Fridays, Virginia Hotel.
- SACRAMENTO (Organized March 2, 1923.) President, Dr. Una Cary; Secretary, Gertrude Ross. Meets Fridays, Hotel Sacramento.
- PHILADELPHIA (Organized April, 1925.) President, Miss Elizabeth E. Johnson; Secretary, Miss Eleanor C. Schaefer, 1015 Chestnut St. Meets The Arcadia Cafe, Widener Bldg.
- SAN JOSE (Organized 1925.) President, Miss Mary Williams, 802 First National Bank Bldg., San Jose. Executive Secretary, Florence M. Curry, 63 W. Santa Clara St. Meets Thursdays, Hotel Vendome.
- SEATTLE (Organized October 14, 1925.) President, Mrs. G. M. Starr; Secretary, Miss Eloise Flagg, 3302 L. C. Smith Building. This Club meets on Thursdays at the Hotel Olympic.
- PORTLAND. President, Mrs. Oliver E. Lutz. Secretary, Miss Corinne F. Wright, 383 Pittock Bldg. Meets Mondays, Elk's Temple.
- SPOKANE. President, Miss Magdalene Doose; Secretary, Miss Mary Keating, 405 Rookery Bldg. Meets Thursdays Hotel Davenport.
- VANCOUVER, B. C. Mrs. Clare Davies, 645 13th Ave. W. Secretary, Irene Fraser, Suite 15, 1070 Haro St.
- KANSAS CITY, President, Patience Hocker; Secretary, Tierra Farrow.
- MANCHESTER, ENGLAND—Organizing.
- DETROIT, Organizing. Stuart Morrow, 1500 Real Estate Exchange Bldg.

How Do You Do!

MAE CARVELL Industrial Engineer

*President Los Angeles Soroptimist Club
1926-1927*

The motive force behind the systems of the Broadway Department Store is Mae Carvell, who had first to do with the educational and personnel features of The Broadway to which she came ten years ago. She attained her present position through the channels of the Commercial Department of the Polytechnic High School in which she taught for several years; a graduate of the U.S.C. College of Law, from whence she was admitted to the bar in 1917; and the Prince School in Boston, a branch of Simmons College for Women where she studied Department Store methods. She is the only woman in the United States to hold the unique position of Industrial Engineer.

A charter member of the Soroptimist Club, she has been identified with its every activity. She has completed a year of service as Vice-President and as our very efficient Finance Chairman. She is active in the Business and Professional Women's Club, charter member of the Women Lawyers' Club, was first President of the Personnel Club, served two years in the Y.W.C.A. Board, and is a member of the Women's Athletic Club.

MAYME V. MATTHAY Hospital and Sick Room Supplies

Vice-President 1926-27

When she came to California with her three small boys and her physician husband, Mayme V. Matthay had had no business experience. The purchase of the old Salem-Sun Drug Company, because of investments made in, it branched out into the hospital and sick-room supply business. Since her husband's death, ten years ago, she and her sons have carried on an enlarging business with both wholesale and retail headquarters, mother and sons being not only partners in business, but "pals" in all other interests. She believes that "it does something to one's pride to fail," and her sons demonstrate that failure is a word not inscribed on the family records.

FROSTA W. PASLEY Auto Dealer

Treasurer, 1926-1927

From Lexington, Kentucky, her birthplace, Frosta Pasley married and came to Colorado, where she spent her married life, and where her son, now 18 years of age, was born. Without business training other than that gained through clerical positions in various offices, she took an accounting position with the Chas. Nelson Company in San Francisco and ten years ago became secretary to the Automotive Finance Company in Los Angeles. She is the rare person who is entirely happy in her office, her church, and her home surroundings. Her hobby is keeping open house all summer to persons who cannot afford vacations.

ALBERTA GUDE LYNCH Women's Shoes

Director 1925-1926 and 1926-1927

Ten years of school-teaching in the public schools of Los Angeles paved the way for Alberta Gude Lynch's absorption in the business of shoes. As Secretary-Treasurer of GUDE'S, she insists she does nothing in her spare time because she hasn't any, that she is interested in everything in the world, but that roses and dogs might be conceived to have more than a passing enthusiasm in the midst of very busy days. She became director in the middle of last year in place of Elizabeth Kenney, resigned; was an able member of last year's Finance Committee. The Club honors itself by her re-election to a second term.

K. ANTINETTE FOSTER Information

Director 1926-1927

A person who knows where you want to go and how you want to go about it better than you do yourself is K. Antinette Foster. She has been a part of the famous "Ask Mr. Foster" Service since her brother, the original "Mr. Foster," conceived the great idea in St. Augustine, Florida. She has served in various capacities in Washington, D. C.; Florida, Michigan, Colorado and California and does a yearly inspecting tour in which she often visits two or three hotels in every State in the Union. Her specific work now is as Director of Training, preparing the assistants who must have specialized knowledge of routes, hotels, resorts, sightseeing all over the world. She has been press-clipping chairman this year and has one of the prize books to crown her efforts.

MONETTE O. TODD Supervisor Salesmanship and Advertising

Director 1926-1927

An interesting career is this of Monette O. Todd's, who came to the City Schools after intensive work as Educational Director of the Broadway Department Store. Each year we look forward to the demonstration in Salesmanship and Advertising under Miss Todd's supervision. Courses are planned to train students for the selling profession. The theory of selling is studied in the class room with instructors who have had practical experience. Students receive their experience in the retail houses of Los Angeles where they work daily. As Supervisor, she assists teachers in every way she can and places the co-operative students. Last year 750 were placed for the Christmas holidays.

ANNA M. BERGERON Mfg. "Key to Beauty" Toilet Preparations

Director 1926-1927

Left a young widow 25 years ago, practically an invalid, with no assets excepting a valuable formula given for an old debt, Mme. Anna M. Bergeron, with no capital but faith and pluck has built up a splendid business as manufacturer of the Key to Beauty Toilet Preparations, sold in all the better stores in this country and abroad. She has studied with the best dermatologists in Europe and the United States, and has been

in great demand for lectures and beauty columns. She is one of our Charter members and has always been a most loyal Club worker.

AMELIA F. JOHNSON Attorney-at-Law: Criminal

Director 1925-1926 and 1926-1927

Already she has made herself known to us through her faithful service to the Club as a member of the Board of Directors, and as Chairman of the Classification Committee. As Deputy City Prosecutor she has an interesting professional life, and has had under her jurisdiction many cases of wide interest. She is a graduate of the University of California and of the University of Southern California, carrying degrees of Bachelor of Arts and Doctor of Jurisprudence; a member of Sigma Iota Chi legal scholarship fraternity, Kappa Beta Phi, legal Woman's Sorority, Women Lawyers' Club, Republican Study Club, Women's City Club, and the Los Angeles Bar Association.

AGNES WOODWARD School of Whistling

Director 1926-1927

Agnes Woodward has learned the language of birds, transcribed it in symbols of her own, or "whistling script," and is making herself and her School of Whistling famous. The school, by the way, is the only one of its kind in the world. A text book in whistling is her late contribution to this unique musical study; her chorus of forty members is a much sought after entertainment feature. Daughter of the late Surgeon-General Charles Meredyth Woodward, she chose a whistling career in place of that of an opera singer, after a faulty placing of her voice by a poor instructor closed the one avenue.

She is a Charter member, has always been a program inspiration and has been a loyal supporter of the broadcasting column in the Soroptimist.

---and last week

(Continued from Page 1)

Murel Knight, a demonstration of her Soroptimist Class; our big Federation Day with Dr. Mariana Bertola and the District officers, guests of honor; Betty Jo's program of Behvmer artists; Rabbi Magnin on "The Advance of Civilization"; "Who I Am, and What I Do" from a group of new members; a discussion of the Union Station and the Railroads' Plan by Samuel Storrow and James S. Howie; the gorgeous Style Show; Lal Chand Mehra in "India's Easter Message"; April birthdays and Agnes Woodward's song birds again; Dr. Minnie Proctor's Chinese program with Dr. Ethel Leonard, Herbert E. House, speakers, and little Helen Field as reader; Monette Todd's Educational Day; Bertha Pearce's presentation of Frank L. Vann, singer; Miss Annette Foster and Abbie Norton Jamison as speakers; Nancy Rice Anderson's charming southern story-telling; Della Hubbard's unforgettable Spring Frolic; Cadman's Day and President's Day, presented by Phoebe Ara White; Vacation Birthdays, also our last program in charge of Della, with 40 participants, and horoscopes for all.

A good year, all told. And now another installation. A new year is beginning. We are ready to give to it our best effort, and to our new officers our loyalty and our encouragement.

LOS ANGELES SOROPTIMIST

Issued Every Tuesday by
THE SOROPTIMIST CLUB
of Los Angeles, Calif.

426-428 West Sixth Street
TRinity 4311

President - - - - - GERTRUDE C. MAYNARD
Vice-President - - - - - MAE CARVELL
Treasurer - - - - - ALIDA DYSON
Secretary - - - - - ALICE MAYOR EDWARDS

Directors

Margaret D. Reordan, Amelia F. Johnson, Fern Dell
Hunt, Cora Bee Sheffield, Addie L. Marks, Alberta
Gade Lynch.

Publication Committee

Editor - - - - - ALICE MAYOR EDWARDS
Associate Editor - - - - - GERTRUDE C. MAYNARD
Contributing Editor - - - - - M. BARBARA DACIER
Advertising Manager - - - - - LILLIAN M. GRANDMASON

PRESIDENT'S REPORT

It is again time for me to make my annual report, and it is with a feeling of satisfaction that I close my second year's work as President of the Soroptimist Club of Los Angeles.

The success of this year has been made possible through the hearty co-operation of the Board of Directors and the various committees, all of which have functioned well, and the loyal support of the members. During this year, there has been a closer unity of purpose and a growing of club fellowship and loyalty which has been marvelous and much has been accomplished.

In submitting this report, for your consideration I am outlining as briefly as possible the work done during the fourth year of this organization.

During the year I have presided at thirty-one regular and ten business meetings. Three regular meetings were taken care of by our Vice-President, Mae Carvell, owing to my absence from the city. There have been twenty Directors' meetings, and many committee meetings.

Have also attended Presidents' Councils, Committee Meetings, Reciprocity Programs of the Federated Clubs, as well as the Los Angeles District and the State Convention, and gave practically four weeks of my time to work on the Community Chest Drive.

Have kept no record of the number of letters received and written, personal interviews and telephone calls answered on Soroptimist Club business.

Membership and Attendance

Through the fourth year as during the third no active campaign was made for new members, simply considering such applications as have been presented to us, but our efforts have been concentrated upon increasing our attendance which was accomplished with remarkable success, our average attendance during the entire period being 115.

We close this fourth year with:

- 149 Regular members
- 5 Associate members
- 9 Press members
- 1 Honorary member, or a total of 164 members.

The work of the Attendance Committee is one of the most exacting and unappreciated offices in an organization. Much of the increase in the attendance was due to the efforts of our Chairman and the Group Captains during this year's work.

Finance

At the beginning of the fourth year a budget was prepared by the Finance Committee, and plans made for increasing our Club funds. It was decided to add 25c to the cost of our luncheon at one program during each month, making it a "special af-

fair," and 5c to the cost of all the other luncheons.

It is surprising to find the amount collected as a result of this action, and I am certain no member has felt the loss of the slightly increased cost of luncheons. With this addition to our Club funds, we were enabled to give some very remarkable programs without drawing upon our regular Club funds. I should add here that much of this expense of our special luncheons was due to the efficient work of the committee having charge of reservations, selling tickets, and seating of guests.

Our Treasurer, Alida Dyson, was always ready with reports or any special statements required to assist us in planning the financial end of our Club affairs.

Through the efforts of our Finance Committee, of which our Vice-President, Mae Carvell, was Chairman, the fourth year closes with substantial amounts in both our General and Service Funds.

Programs

We have given many excellent programs, in fact there were no poor ones, but a few stand out on account of some especially brilliant feature, such as Admission Day, Norma Gould Dance Program, Federation Day, President's Day and our Business and Style Show which featured practically every member of our Club, and was the biggest thing ever put over by our Club both as to program and attendance.

The birthday programs were another feature which added much to the enjoyment of everyone.

Too much credit cannot be given to our Program Committee and Chairman of the Birthday Programs. They never failed us during the entire year.

Service

During this fourth year our "Service" work was concentrated upon increasing our "Educational Loan Fund." \$322.50 was raised at our Harvest Fund Drive during November, when every member donated an amount especially earned or saved in some unusual way.

In May this fund was materially increased through discounts offered on sales by members, and merchandise and cash donations.

Last November the Board of Directors transferred \$500 to this fund and at the Board of Directors' meeting of June 7th, the Finance Committee made the following recommendation which was adopted by the board: That \$500 of the general fund of the Club be set aside for the Service Fund, and that \$150 of this amount be transferred to the Gertrude C. Maynard scholarship with the further recommendation that it be made a perpetual fund maintained by the Soroptimist Club in recognition of her contribution to the Service Idea of the Club throughout her entire administration.

From this fund there were eight scholarships paid, ranging from \$50 to \$150, and with the amount now in this fund, our Club will be enabled to help more students when the new term commences in the fall.

Six of the scholarships were named as follows: Gertrude C. Maynard, Della H. Hubbard, Mary Jean Henley, Lillian M. Grandmason, Oda Faulconer, Louise Helen Kramer.

Bulletin

Much faithful and conscientious work has been done on our Bulletin. This has been the most important medium of keeping our members in closer touch with each other than

they could by meetings only, and has been a boon to the member who was unable to attend our meetings. The advertisements have paid practically the entire cost of publication.

Without this, programs would have had to be multigraphed or printed each week. Addressing, postage and envelope cost would have been the same and general information would have been limited. Rosters of membership have been published in five issues.

Much of the success of our Bulletin is due to the work and ability of our Editor and Secretary, Alice Mayor Edwards. She has been most ably assisted by the Reporters, Advertising Committee, and special committees for the Business and Style Show and the Installation issues.

Constitution and By-Laws

There were several changes made in the Constitution and By-Laws during the last year, therefore a new edition of this has been published in loose-leaf form so as to be uniform with our new Roster.

Roster and Pins

The price of pins was changed to \$3 for this year, and 14 have been purchased during this period.

New loose-leaf Rosters are in the press and we hope they will be ready for distribution at the Installation Program.

Federation

The visit of Dr. Bertola, Mrs. Lorbeer, and various District Chairmen, during the year, has served to make a closer and more direct tie between our Club, the Los Angeles District and the State Federation. More of our members have attended the Presidents' Councils and the Conventions. Having several of our members as chairmen in the Federation has also strengthened the connection between our own Club and other women's organizations.

We have paid in full our quota on the "Endowment Fund" and have our name on the honor list.

Press and Publicity

Through the efforts of our Press Chairman there has grown a friendly co-operation between our members and the Club Editors of the daily press, and we owe them much appreciation and thanks for the consideration they have shown us. Our Press Clippings Book was one of four of the best in the Los Angeles District.

Our press notices have been made more attractive with pictures of our members, the publication having been made possible through the assistance of our Club photographer.

Flowers, Attendance and Service Fund Prizes

Much has been added to the beauty and enjoyment of our programs through the flowers which have decorated our tables during the year, the gift of our member, Helen Louise Kramer, and the prizes which have been an added feature to the various programs. These prizes have been most generously given by various members of our Club.

Last but not least, what would I have done without the assistance of our Secretary, Alice Mayor Edwards? She always found time to ring up the members, answer calls, write the interesting "How Do You Do" articles, and see that an "ad" was put in at the very last moment. Words are a very feeble expression of my appreciation for her efforts given to our Club business.

I trust the results of this last year have come up to your expectations. There have been mistakes made, opportunities passed by, and things left undone which should have been done, but at all times I have endeavored to do what I believed was for the best interest of the Club.

I regret that all of my dreams for our work were not fulfilled. A few of my disappointments were that we were unable to get:

- (1) A perfect record of attendance of members and guests,
- (2) Programs closing on time,
- (3) Club Singing,
- (4) Roll Call that could be heard,
- (5) 100% response to special requests and questionnaires, so that many letters and telephone calls might have been avoided,
- (6) More personal and cordial reception on the part of members to visitors and new members.

Taken as a whole, however, we have had a very successful year. I thank each and every member for her work and loyal support during the past year. I am now turning over the Club to the officers you have elected to serve you the coming year and prophesy a bigger and better Soroptimist Club.

Gertrude C. Maynard,
President.

SECRETARY'S REPORT OF MEMBERS

Number members July 1, 1925:

Active	140
Associate	5
Press	9
Total	154

The following resignations were received during the year: Mrs. Herbert E. Cable, Dr. Mona Bettin, *Pathologist*; Helen E. Hileman, *Buyer*; Caroline E. Wetzell, *Millinery Supplies*; Eva L. Swager, *School of Cosmeticians*; Virginia Thompson Slauson, *Photo Engraving*; Jennie G. Ghrist, *Medical Examiner*; Marion Shaffer, *Millinery, Retail*; Jack White, *Leases*; Etha K. Johnson, *Fraternal Organizer*; Margaret Roberts, *Medical Examiner, Y.W.C.A.*; Jane C. Humphreys, *Office Manager*; Elisabeth Wirth, *D.D.S., Dentist*; Louise P. Crow, *D.O., Pediatricist*; Inez S. Smith, *D.O., Gynecologist*; George P. Bullock, *Judge*; Annie I. Dempsey, *Personal Service Bureau*, (resigned, reinstated, resigned); Alice L. Lee, *Electrolysis*; Frankie Wilcox, *Associate Auto Supplies*; Frances Parker, *Photographer*; Julia Riddle, *M.D., Internist*; Agnes Rud-dock, *M.D., Health Supervisor*; Nell Souter, *Ready-to-Wear Mfg.*; Mary Eaker Abbott, *Associate*.

The following members were dropped:

June Holmes Kirksey, *Draperies*; J. Elva Faulkner, *Mail Order*; Regge Doran, *West Coast Theatres*; Katherine B. Higgins, *Social Worker*; Sadie L. Button, *Laundry*; Delia Bastable, *Credit Manager*; Mabel Van Tress, *Cleaner and Dyer*.

Deceased: Jennie G. Spencer, D.O.

Members received from July 1, 1925, to June 22, 1926:

Active: Ethel C. Wolff, *Cashiers and Packers' Supervisor*; L. Merwin Palmer, *Sales Plans*; Marcia A. Patrick, M.D., *Lung Specialist*; Phoebe Ara White, *Voice Teacher*; Louise Savant, *Music Appreciation Lecturer*; Hulda Burk (McInness), *Jewelry, Wholesale*; Mary Sinclair Crawford, *Dean of Women*; Addie Mae Thomas, *Building Construction*; Rose W. Hendee, *Inheritance Tax Research*; Peggy Mills, Jr., *Accountant*; Beatrice Lantz, *Vocational Research*; Izora M. Scott, *Actuary*; Marion Lois, *Lois Service*; Louise Malstrom, *Artificial Flowers*; Blanche B. Harris, *Subscription Sets Books*; Nell Souter, *Ready-to-Wear*; G. Laurine Broadwell, *Vocational Education Supervisor*; Agnes Reupsch, *Neckwear and Scarfs Buyer*; Mabelle L. De Witt, *National School of Cosmeticians*; Sarah L. Murray, D.O., *Obstetrician*; Nettie Johnson Lux, *Permanent Waving*; Mary Dickson Bruce, *Director of Nursing*; Edith M. Weir, *Appointment Secretary*; Bessie Abbott Ochs, *Importer Oriental Furniture*; Sarah N. Parker, *Brassieres and Accessories*; Anita Blanche Mitchell, *Children's Frocks, Retail*; Mme. Georgene, (Dora G. Crawford), *Evening Wear*; Peggy Halloran, *Notary*; Annie T. Schiebusch, *Postal Service*; Nellie G. Dougherty, *Notions*; Mary E. Smith, *Campaign Manager*; Helen Roberts Rankin, *Manager Women's Department, Frank Meline Co.*; Lillian E. Asher, *Director Educational Department, The May Co.*; Betty Barrett, *Editorial Representative, Good Furniture Magazine*.

Honorary Member, Susan M. Dorsey, *Superintendent City Schools*.

Associate Members: Marjorie Waite, *Associate Printer*; Mary Eaker Abbott, *Associate Lois Service*; Rose Dyke, *Associate Cosmetician*.

Changes of Classification

Violet Turner Searcy from *Decorated Parchments* to *Interior Decorator*.

Franc Dillon from *Campaign Manager to Publicity*.

Bertha M. Just from *Electrotypes* to *Photo Engraving*.

Harriet L. Conner from *Associate Osteopathic Physician* to *Osteopathic Physician*.

Rose W. Hendee from *Inheritance Tax Research* to *Taxation Lecturer*.

Evangeline N. Percival, *Obstetrician* to *Pediatricist*.

Lena E. Foster from *Addressing and Mailing* to *Direct-By-Mail Advertising*.

Harriet W. Pahl from *Superintendent of Hospital* to *Superintendent of Clinic*.

Harriet W. Pahl, from *Superintendent of Clinic* to *Superintendent of Hospital*.

Matilda Olson, from *Designer and Millinery* to *Millinery, Retail*.

Cora Bee Sheffield, from *Art Instruction* to *Art and Gift Studio*.

Amelia F. Johnson, from *Deputy City Prosecutor* to *Attorney-at-Law: Criminal*.

Total members, June 22, 1926:

149 Regular; 5 Associate; 1 Honorary; 9 Press.

Attendance Record for 1925-1926

	Members	Guests	Total
June 23	52	0	52.....Business
June 30	65	3	68
Sept. 1	80	11	91
Sept. 8	95	121	216
Sept. 15	56	6	61
Sept. 22	61	0	61.....Business
Sept. 29	79	15	94
Oct. 6	82	4	86
Oct. 13	69	3	72
Oct. 20	75	30	105
Oct. 27	71	1	76.....Business
Nov. 3	78	27	105
Nov. 10	84	15	99
Nov. 17	76	30	106
Nov. 24	77	0	77.....Business
Dec. 1	72	12	84
Dec. 8	67	5	72
Dec. 15	87	91	178
Dec. 22	83	28	111
Dec. 29	63	0	63.....Business
Jan. 5	65	10	75
Jan. 12	86	9	95
Jan. 19	87	11	98
Jan. 26	77	0	77.....Business
Feb. 2	71	14	85
Feb. 9	95	44	145
Feb. 16	101	36	137
Feb. 23	75	23	98
Mar. 2	89	6	95
Mar. 9	84	1	85.....Business
Mar. 16	80	6	86
Mar. 23	122	597	719
Mar. 30	71	8	79
April 6	72	10	82
April 13	69	1	70.....Business
April 20	83	41	124
April 27	62	31	96
May 4	98	9	107
May 11	71	3	74.....Business
May 18	73	8	81
May 25	81	143	224
June 1	92	108	200
June 8	102	2	104.....Business
June 15	84	45	129

Alice Mavor Edwards, Secretary.

FORMER OFFICERS



ODA FAULCONER
Attorney-at-Law, Civil
President 1922-1923 Director 1923-1924



MARY JEAN HENLEY
Realtor
President 1923-1924 Director 1922-1923



GERTRUDE C. MAYNARD
Book Store
President 1924-1925



VETURIA C. ARMSTRONG
Physician
Vice-President 1922-1923



CONSTANCE BALFOUR
Singer
Vice-President 1923-1924



LENA R. PEPPERDINE
Auto Supplies
Vice-President 1924-1925
Director 1923-1924



MARIE ANTONIETTE HAAS
Banking
Treasurer 1922-1923



FLORENCE E. BANKS
Credit Manager
Secretary 1922-1923



ALBERTA P. WILSON
Garage Owner
Treasurer 1923-1924 and 1924-1925

FORMER OFFICERS



ELIZABETH BOWMAN TOMLINSON
Fire Insurance
Secretary 1924, Director 1923-1924



ESTELLE M. LE SAGE
Multigrapher
Secretary 1925



ALICE MAVOR EDWARDS
Journalist
Secretary 1925-1926
Editor of *Los Angeles Soroptimist* 1925-1926



LILLIAN M. GRANDMASON
Optometrist
Director 1922-1923 and 1923-1924



CORA B. FITHIAN
Life Insurance
Director 1922-1923



DELLA H. HUBBARD
Chiropodist
Director 1922-1923 and 1923-1924



ALETHA GILBERT
City Mother
Director 1922-1923 and 1923-1924

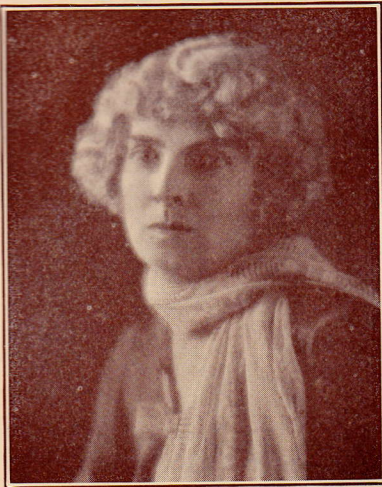


MARTHA C. WEAVER
Girl's School
1922-1923 and 1923-1924



FRANCES CADIEUX ALLEN
Guitar-Banjo-Mandoline Teacher
Director 1924

OUTGOING OFFICERS



GERTRUDE C. MAYNARD
Book Store
President 1925-1926



MAE CARVELL
Industrial Engineer
Vice-President 1925-1926



ALIDA DYSON
Window Shades
Treasurer 1925-1926



CORA BEE SHEFFIELD
Art and Gift Studio
Director 1925-1926



FERN DELL HUNT
Investment Bonds
Director 1925-1926



ELIZABETH L. KENNEY
Inheritance Tax Appraiser
Director 1925



ADDIE L. MARKS
Gowns
Director 1925-1926



MARGARET D. REORDAN
Director 1924-1925 and 1925-1926



AMELIA F. JOHNSON
Attorney-at-Law, Criminal
Director 1925-1926

INCOMING OFFICERS



MAE CARVELL
Industrial Engineer
President 1926-1927



MAYME V. MATTHAY
Hospital and Sick-Room Supplies
Vice-President 1926-1927



FROSTA W. PASLEY
Auto Dealer
Treasurer 1926-1927



AMELIA F. JOHNSON
Attorney-at-Law, Criminal
Director 1926-1927



ALBERTA GUDE LYNCH
Women's Shoes
Director 1926-1927



AGNES WOODWARD
School of Whistling
Director 1926-1927



MONETTE O. TODD
Salesmanship-Supervisor L. A. Schools
Director 1926-1927



ANNA M. BERGERON
Mfg. Key to Beauty Toilet Preparations
Director 1926-1927



K. ANTHENETTE FOSTER
Information
Director 1926-1927

MEMBERS SOROPTIMIST CLUB, JUNE 1926



ENID BECK
Photographer, Publicity Manager
Witzel



ADELAIDE B. BREWER
Piano Teacher



G. LAURINE BROADWELL
Vocational Education-Supervisor



CHARLOTTE BROWN, M.D.
Anaesthetist



ROSE C. BRYANT
Big Sister's League



MADGE B. BURNHAM
Law Course, Correspondence



HULDA BURKE (McInness)
Jewelry, Wholesale



M. E. CLAIREMONT
Insurance, Marine



CLAUD A. CAMPBELL
Insecticides



CHARLOTTE CLARK
Crackers



ANNIE L. COLBURN
Furs



MADGE H. CONNELL
Funeral Director



HARRIET L. CONNOR, D.O.
Osteopathic Physician



ALICE E. CROSS
Corsets



BARBARA M. DACIER
S. W. Museum—Extension Sec'y



MABELLE L. DEWITT
School of Cosmeticians



FRANC N. DILLON
Publicity



NELLIE M. DOUGHERTY
Notions, Buyer



NANNIE C. DUNSMOOR, M.D.
Surgeon, Associate



M. Z. ELLISON
Ready-to-Wear, Women's



LENA E. FOSTER
Advertising, Direct by Mail



KATHERINE FREDERICKS
Furniture



MARGARET C. GILMORE
Laces, Veils, Ribbons, Buyer



NORMA GOULD
Dancing Director



ANNA V. GREEN
Women's Hotel



GERTRUDE CONSTANT GRIFFITH
Hospital Manager



MME. GEORGENE
Evening Wear



DOROTHY E. HALL
Lighting Fixtures



SYLVIA HARDING
Violinist and Teacher



ANNE HARE HARRISON
Writer Children's Pageants



ROSE W. HENDEE
Taxation Lecturer



LYDIA KNOTT HILLYER
Screen Actress



WINIFRED M. HAUSAM
Vocational Director



ALICE S. JOLLEY
Member at Large



BERTHA M. JUST
Photo Engraving



EDNA M. KINNEY
Hosiery



MUREL KNIGHT
Public Speaking



FRANCES R. KNOX
Court Reporter



HILDA A. KOHR
Weight Reduction



LOUISE HELEN KRAMER
Dancing Teacher



LOUISE P. KRAMER
Dancing Teacher, Associate



BEATRICE LANTZ
Vocational Research



ROSE LATHROP
Florist



CLARA LEWIS
Bakery



MARION LOIS
Business Building Service



LOUISE MALSTROM
Artificial Flowers



VESTA MILLS
Drama Instructor



ANITA BLANCHE MITCHELL
Children's Frocks, Retail



LAURA L. MITCHELL
Hospital Owner



EDITH I. MOON, D.Ch.
Chiropractor



ISABEL F. MOSES
Advertising Agency



KATE M. MYERS
Uniforms



OLGA McNEILE
Surgeon



MATILDA OLSON
Millinery



HARRIET W. PAHL
Hospital Superintendent



BERTHA M. PEARCE
Auto Tours



EVA R. PHIPPS
Glove Cleaner



MARGARET B. QUINN
Electro-Therapy



AGNES REUSCH
Neckwear and Scarfs, Buyer



ESTELLA C. ROATH
Physician's Office Ass't.



VOLA DE GRAFF ROENTGEN
Dressmaker by the Day



AVIS L. ROURKE
Deposition Notary



MARY M. RUSSELL
Camp Fire Girls



RUTH SAPP
Surgical Assistant



MME. LOUISE SAVANT
Music Appreciation Lecturer



ANNA T. SCHIEBUSCH
Postal Service, City Scheme Clerk



IDA E. SCHMADEL
Groceries, Retail



VIOLET TURNER SEARCY
Interior Decorator



FRANCES E. SHANER
Cosmetician



PAULA STEINEN
Cutlery



GRACE S. STOERMER
Banking, Women's Department



CHRISTINE STRANG
Tea Shop



DELPHINE SUTCLIFFE
Life Insurance, Associate



NETTIE TAFF
Food Demonstration



MME. ANNA M. TILL
Psycho-Analyst



MATTIE N. WALLACE
Lampshades, Pillows, Designer



ADA S. WATSON
Golf Accessories



MARY H. WIPPERMAN
Hair Goods—Buyer



SARA E. WISE, M.D.
Electronic Diagnosis



ETHEL C. WOLFF
Cashiers, Packers, Supervisor



PHOEBE ARA WHITE
Voice Teacher



SARAH L. MURRAY, D.O.
Obstetrician



MARY E. SMITH
Campaign Manager



GEORGIE PICKRELL
Insurance Broker



EDITH M. WEIR
Appointment Secretary



ETHEL WORTHINGTON LEE
Printing



EVANGELINE N. PERCIVAL, D.O.
Pediatricist

Members Whose Pictures Do Not Appear

LILLIAN E. ASHER
Educational Director, May Co.

BETTY BARRETT
Editorial Representative

MARY D. BRUCE
Director of Nursing

ESTHER N. BUTTELL
Men's Shoes

EMMA L. CHIPMAN
Engraving

HAYDEE B. CLARKSON
Coffees and Teas

HILDEGARDE D. CRAMER (BIBBS)
Hygienist-Dental

MARY SINCLAIR CRAWFORD
Dean of Women

SUSAN M. DORSEY
*Honorary
Supt. Los Angeles Schools*

ROSE DYKE
Cosmetician-Associate

GEORGIA P. FRIEDMAN
Advertising Copy Writer

ETTA GRAY, M.D.
Gynecologist

FANNIE GUGGENHEIM
Linens, Importer

PEGGY HALLORAN
Notary

BLANCHE B. HARRIS
Subscriptions Sets

MARGARET H. HEALY
Men's Shoes, Associate

ESTHER HERON
Preservation of Fruits

ELVA E. HIXON
County Clerk Deputy

NETTIE JOHNSON LUX
Permanent Waving

PEGGY MILLS
Accountant Junior

KATHERINE MUSELWHITE
Betty-Jo Frocks

BESSIE ABBOTT OCHS
Oriental Furniture Importer

L. MERWIN PALMER
Sales Plans

HELEN M. PARKE
Automobile Finance

SARAH N. PARKER
Brassieres, Accessories

MARCIA A. PATRICK, M.D.
Lung Specialist

MINNIE M. S. PROCTOR, D.D.S.
Dentist, Children's

HELEN ROBERTS RANKIN
Manager Frank Meline Co., Women's Dept.

NINA MAUD RICHARDSON
Literary Critic

IZORA M. SCOTT
Actuary

STELLA DENNIS TAYLOR
Music Publisher

ADDIE M. THOMAS
Building Construction

MARJORIE A. WAITE
Printing Associate

ROSE P. WALKER
Office Building Manager

MINNIE H. WATSON
Hemstitching, Pleating

H. ADELE WHITE
Probate Court Appraiser

... Press ...

ESTELLE LAWTON LINDSAY
Los Angeles Evening Express

GENE LOUGHBOROUGH
Los Angeles Examiner

RUTH MCCLINTOCK
Los Angeles Evening Express

FRANCES MORRIN
Los Angeles Examiner

MYRA NYE
The Times

GERTRUDE M. PRICE
Los Angeles Record

KATE BREW VAUGHN
Los Angeles Evening Express

CAROLINE WALKER
Los Angeles Evening Herald

JESSICA FINLEY
Illustrated Daily News

Purpose

- (a) *Patriotic*
To foster loyalty to our flag and to assist in spreading and popularizing the ideals of true Americanism.
- (b) *Civic*
To encourage and support meritorious civic movements and to urge co-operation for the betterment of local conditions.
- (c) *Moral*
To encourage the practice of the Golden Rule in private and business life.
- (d) *Social*
To promote the spirit of service and true friendship among the members.
- (e) *Personal*
To develop efficiency and the success to be derived therefrom. The interchange of ideas and of business methods as a means of increasing the efficiency and usefulness of Soroptimism. The recognition of the worthiness of all legitimate occupation and the dignifying of the occupation of each Soroptimist as affording her an opportunity to serve society.